

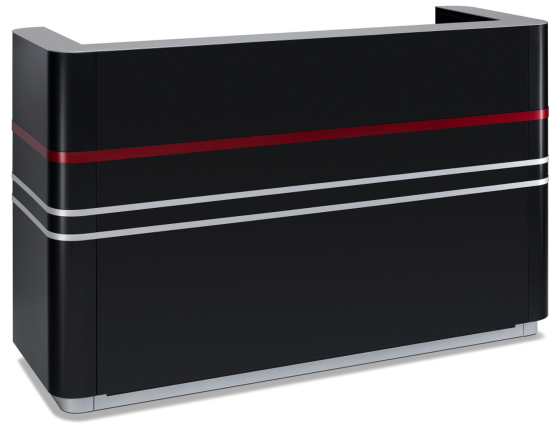
WORKSPACE Basic Counter

Standard

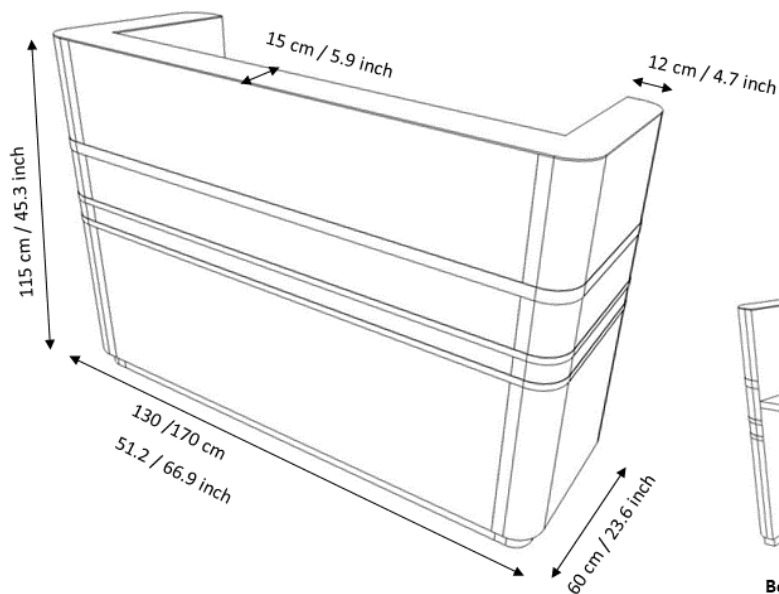
- semi-matt finished in standard colour
- as sitting or standing workstation
- metal body with 4mm aluminium top (D 15 cm)
- 19 mm table top in linoleum black (4166 charcoal), grey (4132 ash), light grey (4175 pebble) or pastel green (4183 pistachio)
- with base (H 6 cm)
- fixed cable outlet (diameter 6 cm, incl. cover and cable duct)

Optionally

- multicoloured paint finish or RAL colour of your choice
- with 3 horizontal decorative trims
- with LED base lighting



Dimension



Beispiel Sitztheke

Tischplatte auf 74 cm Höhe

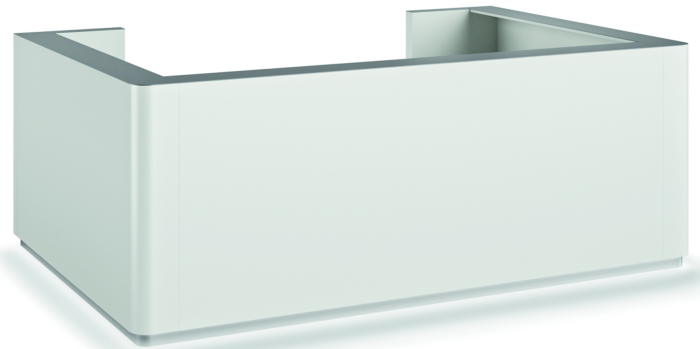
Example sitting workstation

height of worktop at 74 cm / 29.1 inch

WORKSPACE Reception desk

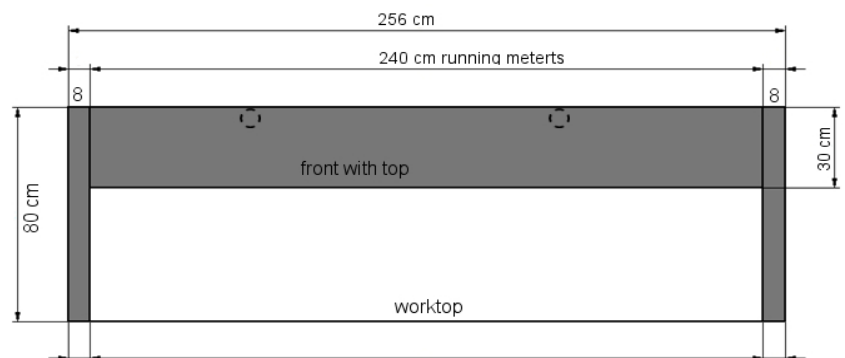
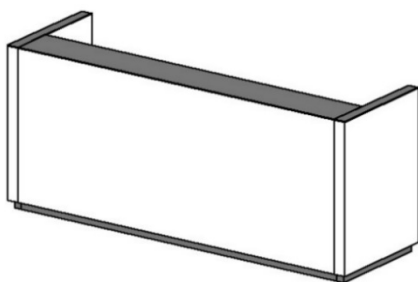
Details

- Versatile and adaptable: The construction system allows for linear or L-shaped counter solutions, cubic and rounded counters with a curved front, up to a full circle counter. The base of all reception counters can be fitted with an impressive LED lighting system. The electrification via cable conduits and outlets in the table top as well as various interior organizing options behind the counter remain invisible.

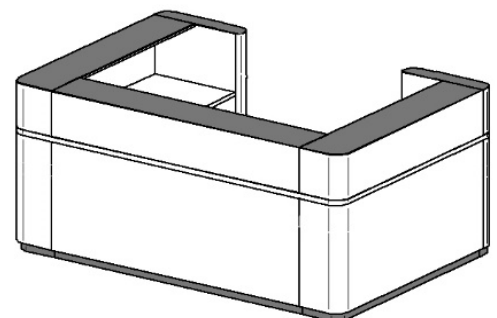
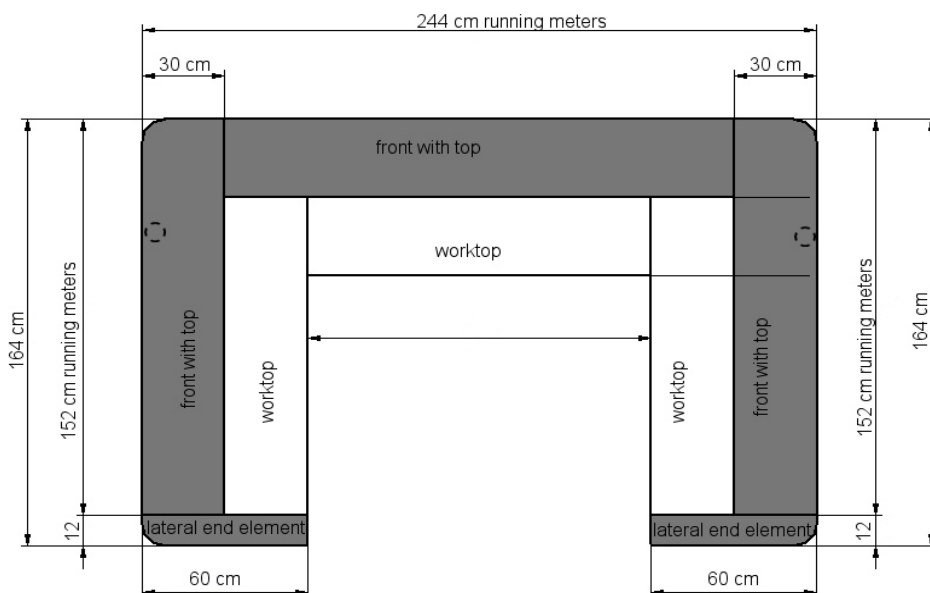


Example 1: linear counter with square corners / depth of worktop: 80 cm, depth of top: 30 cm

Dimension



Example 2: U-shaped counter with rounded corners and decorative trims / depth of worktop: 60 cm, depth of top: 30 cm



total height: 115 cm