

FLIP-S

IN desk power module

Flip-S is our latest innovation in power and data distribution, specifically designed to meet the evolving demands of contemporary work environments.

Engineered to provide flexible connectivity options, the Flip-S is available in a range of configurations, including high-speed USB A+C PD 35W or 65W for fast charging, CAT6A data, USB-A or USB-C, HDMI, VGA and audio connections. Its slim cover flush with the surface when closed.

Whether you need to power multiple devices, share presentations or ensure high-speed data transmission, Flip-S delivers all the functionality and convenience required in today's agile workspaces.



AVAILABLE SOCKET TYPES:



E TYPE F TYPE G TYPE USB CHARGER

AVAILABLE MEDIA CONNECTIONS:



DATA USB HDMI VGA AUDIO

APPROVALS & CERTIFICATES:



FASCIAS & END CAPS



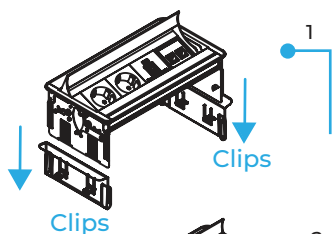
BODY



USB

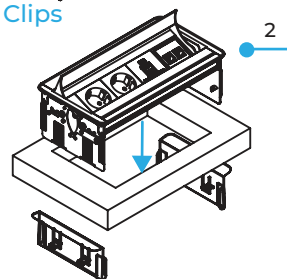
- COMPLIES WITH THE BSI KITEMARK KM 686563 (UK), IEC 60884-1:2002 + A1:2006 AND IEC 60884-2-7:2011 + A1:2013 (EUROPE)
- FITS FLUSH FOR EFFORTLESS INSTALLATION. DESIGNED TO OPERATE IN THE CLOSED POSITION WITH EQUIPMENT PLUGGED IN
- AVAILABLE WITH 35W OR 65W USB A+C CHARGER (PD & QC)
- AVAILABLE WITH A CHOICE OF COUNTRY-SPECIFIC AC POWER SOCKETS
- AVAILABLE WITH THE INTERCHANGEABLE MULTIMEDIA PLATE (IMP) SYSTEM
- DESIGNED TO FIT DESK THICKNESS FROM 10 TO 40MM

INSTALLATION

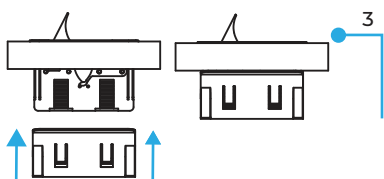


Ensure that there is sufficient clearance, 150 mm below the surface and 30 mm between the cutout edge and the edge of the work surface.

STEP 1. Lift the clips and slide the side fixing down.

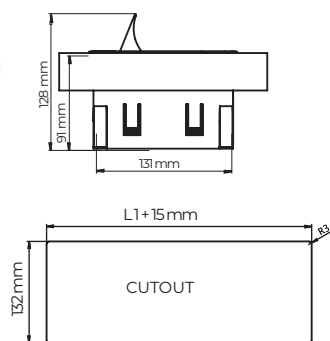
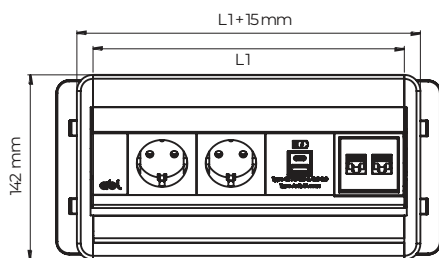


STEP 2. Place the module into the table cutout.

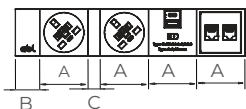


STEP 3. Pull the sliding fixing back up until the module is fixed to the table.

STANDARD DIMENSIONS



Legend:



Note: All sockets, except UK and Universal type, are manufactured without half blank plate (C). The module length depends on the required configuration and socket type.

A = 53,2 mm, B = 26,6 mm, C = 13,3 mm

TECHNICAL

Configuration:

Power / Multimedia / USB A+C chargers (PD & QC) / Combined Power and Multimedia in combined units are separated internally

Earthing: Fully earthed

Fusing: (UK sockets only to enable compliance to BS6396) 5mm x 20mm ceramic fuses, with appropriate marking indicating the rating (3.15A/5A). All sockets feature integral, spare fuses patented by ABL. Choice of up to four sockets with 5A fuse, and up to six sockets with 3.15A to comply with BS6396.

Power cord: 0.5m standard lead with 3 Pole connector allows mains or connector leads to be changed to suit requirements, especially useful during moves and changes. Optionally available hardwired cable with appropriate national mains plugs.

Testing: 100% testing - continuity, polarity & earth

Testing of the USB PD & QC chargers: Output voltages, current, and power in all types of charging standard.

All Flip-S power modules are fully manufactured in-house using ISO 9001:2015 quality-controlled practices.

ABL's power modules are tested in accredited laboratories of certification houses twice a year; while in-house quality control testing of each product is completed on every single power module before it leaves the factory.