

NUANCIER TISSUS

—

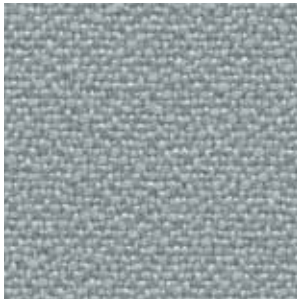
**FABRICS SHADE CARD
KLEURENKAART STOFFEN**

Edition 2025



BONDAÏ • Cat. A

KD



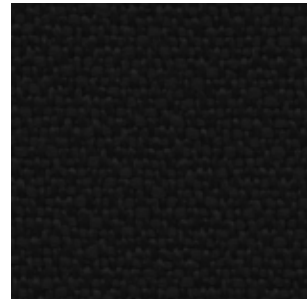
FIDIVI 8078

KA



FIDIVI 8010

KE



FIDIVI 8033

• **KD** | Gris nuage, Cloud grey, Nevel grijs • **KA** | Gris orage, Storm grey, Storm grijs • **KE** | Noir, Black, Zwart •

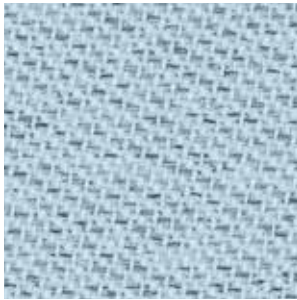
CHILI • Cat. B

BC



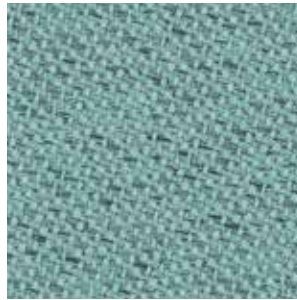
GABRIEL 60114

BF



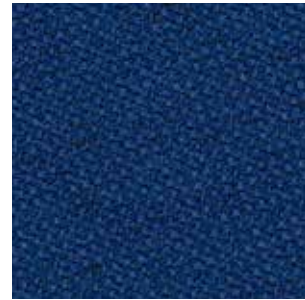
GABRIEL 66175

BG



GABRIEL 68189

BH



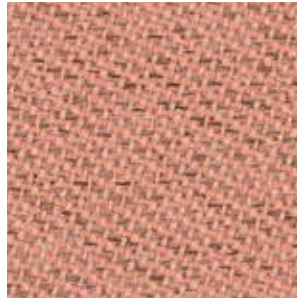
GABRIEL 66174

BK



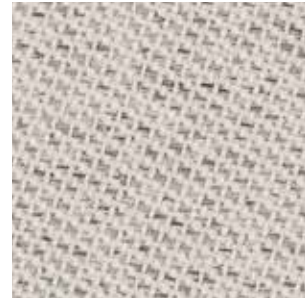
GABRIEL 68197

BL



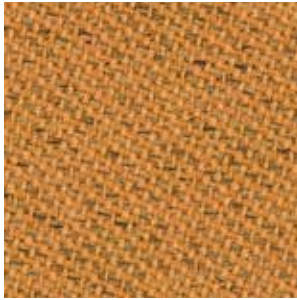
GABRIEL 63092

BM



GABRIEL 61174

BO



GABRIEL 61173

BN

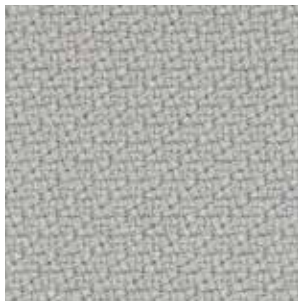


GABRIEL 61171

- **BC** | Gris clair chiné, Mottled light grey, Gespikkeld lichtgrijs
- **BF** | Bleu givré chiné, Mottled frosty blue, Gespikkeld ijsblauw
- **BG** | Céladon chiné, Mottled celadon, Gespikkeld celadon
- **BH** | Bleu minuit chiné, Mottled midnight blue Gespikkeld middernachtblauw
- **BK** | Vert olive chiné, Mottled olive green, Gespikkeld olijfgroen
- **BL** | Saumon chiné, Mottled salmon, Gespikkeld zalmroze
- **BM** | Beige chiné, Mottled beige, Gespikkeld beige
- **BO** | Curcuma chiné, Mottled turmeric, Gespikkeld kurkuma
- **BN** | Chocolat chiné, Mottled cocoa, Gespikkeld chocolade

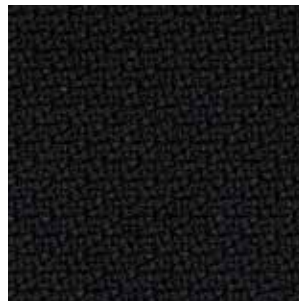
STEP • Cat. B

E5



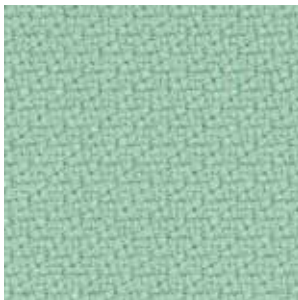
GABRIEL 60004

A6



GABRIEL 60999

E4



GABRIEL 68118

A4



GABRIEL 68158

A3



GABRIEL 65018

A1



GABRIEL 68120

A9



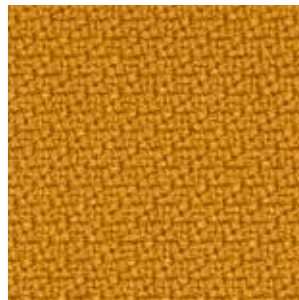
GABRIEL 68121

A2



GABRIEL 61149

A5



GABRIEL 62057

E6

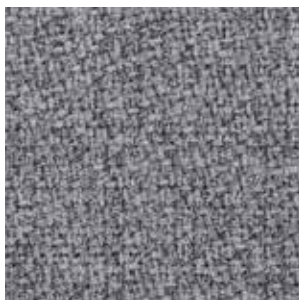


GABRIEL 63075

- **E5** | Gris clair, Light grey, Lichtgrijs
- **A6** | Noir, Black, Zwart
- **E4** | Vert d'eau, Aqua, Watergroen
- **A4** | Bleu pétrole, Petroleum blue, Petroleum blauw
- **A3** | Bleu marine, Navy blue, Marine blauw
- **A1** | Bambou, Bamboo, Bamboe
- **A9** | Vert anglais, English green, Engels groen
- **A2** | Beige, Beige, Beige
- **A5** | Jaune moutarde, Mustard yellow, Mosterd geel
- **E6** | Tomette, Brick red, Terracotta

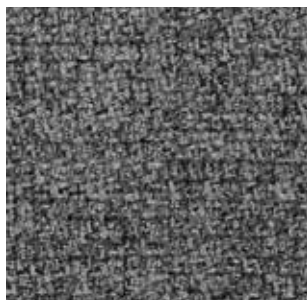
STEP MÉLANGE • Cat B

B5



GABRIEL 60004

B1



GABRIEL 60011

E7



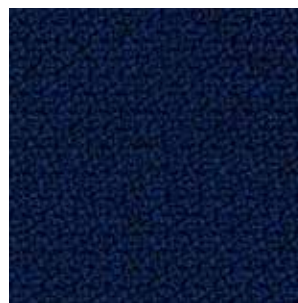
GABRIEL 68118

B4



GABRIEL 67072

B6



GABRIEL 65018

B2



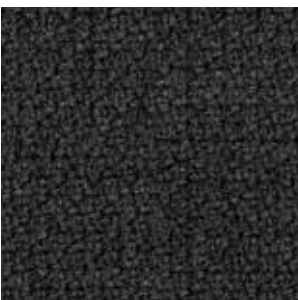
GABRIEL 68120

E9



GABRIEL 62057

B7

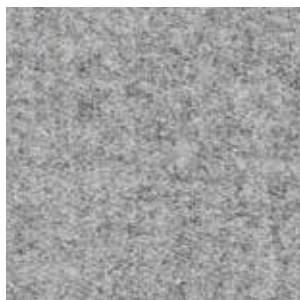


GABRIEL 60021

- **B5** | Gris clair chiné, Mottled light grey, Gespikkeld lichtgrijs
- **B1** | Anthracite chiné, Mottled graphite grey, Gespikkeld antraciet
- **E7** | Vert d'eau chiné, Mottled aqua, Gespikkeld watergroen
- **B4** | Bleu dénim chiné, Mottled denim blue, Gespikkeld denim blauw
- **B6** | Marine chiné, Mottled navy blue, Gespikkeld marineblauw
- **B2** | Bambou chiné, Mottled bamboo, Gespikkeld bamboe
- **E9** | Jaune moutarde chiné, Mottled mustard yellow, Gespikkeld mostergeel
- **B7** | Marron foncé chiné, Mottled dark brown, Gespikkeld donkerbruin

FENICE • Cat. D

DA



PUGI 601

DB



PUGI 603

CJ



PUGI 351

DC



PUGI 302

DF



PUGI 455

DE



PUGI 452

DG



PUGI 466

DH



PUGI 152

DZ



PUGI 563

DD



PUGI 553

DI



PUGI 102

DJ



PUGI 103

• **DA** | Gris clair chiné, Mottled light grey, Gespikkeld lichtgrijs • **DB** | Anthracite chiné, Mottled graphite grey, Gespikkeld antraciet • **CJ** | Bleu clair chiné, Mottled light blue, Gespikkeld lichtblauw • **DC** | Bleu foncé chiné, Mottled dark blue, Gespikkeld donkerblauw • **DF** | Céladon chiné, Mottled celadon, Gespikkeld celadon • **DE** | Vert olive chiné, Mottled olive green, Gespikkeld olijfgroen • **DG** | Vert foncé chiné, Mottled dark green, Gespikkeld donkergroen • **DH** | Rose poudré, Powder pink, Poeder roze • **DZ** | Terre de sienna, Dark sienna, Gebrande sienna • **DD** | Chocolat chiné, Mottled cocoa, Gespikkeld chocolade • **DI** | Curcuma chiné, Mottled turmeric, Gespikkeld kurkuma • **DJ** | Rouille chiné, Mottled rust red, Gespikkeld roestbruin •

	Composition Composition Samenstelling	Poids du tissu Weight Stofgewicht	NB du tour d'abrasion Abrasion resistance Slijtweerstand	Tenue à la lumière Light fastness Lichtvastheid	Résistance au frottement Fastness to rubbing Schoorweerstand	Normes anti feu Flammability Brandveiligheidsnormen	Environnement Environment Milieulabel
Bondaï Cat. A	100% polyester	350 g/ml (lm) 250 g/m ² ±5%	150 000 EN ISO 12947-2	6 EN ISO 105-B02	4-5 EN ISO 105 x 12 • Mouillé-Sec • Wet/Dry • Nat-Droog	EN 1021 - 1&2 BS 7176 BS 5852 Crib 5	STANDARD 100 by OEKO-TEX®
Chili Cat. B	<ul style="list-style-type: none"> • 100% polyester recyclé post-consommation fr (fr à l'intérieur de la fibre) • 100% flame-retardant post-consumer recycled polyester (FR inside fibres) • 100% post-consumer gerecycled polyester fr (fr in de vezel) 	470 g/ml (lm) (15.16 oz / lin yd)	60 000 EN ISO 12947-2	5-8 EN ISO 105-B02	4-5 EN ISO 105 x 12 • Mouillé-Sec • Wet/Dry • Nat-Droog	EN 1021 - 1&2 NFP 92-503/504/505 M1 NF D 60-013 AM18 BS 7176 BS 5852 Crib 5 DIN 4102 B1 EN 13501	STANDARD 100 by OEKO-TEX® <ul style="list-style-type: none"> • Fibre 100% recyclée • 100% recycled fabric • 100% gerecycled vezel <ul style="list-style-type: none"> • Basse émission de COV • Low emission of VOC • Lage VOS-emissie
Step Step Melange Cat. B	100% trevira® CS	470 g/m ² (15.16 oz / lin yd)	100 000 EN ISO 12947-2	5-7 EN ISO 105-B02	4-5 EN ISO 105 x 12 • Mouillé-Sec • Wet/Dry • Nat-Droog	EN 1021 - 1&2 NFP 92-503/504/505 M1 NF D 60-013 AM18 BS 7176 BS 5852 Crib 5 DIN 4102 B1 EN 13501	STANDARD 100 by OEKO-TEX® EU Ecolabel <ul style="list-style-type: none"> • Teintures non métalliques • Non-metallic dyestuffs • Niet-metaalhoudende verfstoffen <ul style="list-style-type: none"> • Basse émission de COV • Low emission of VOC • Lage VOS-emissie
Secret Cat. C	76% PVC - 22% PES - 2% PU <ul style="list-style-type: none"> • Protection antibactérienne • Antibacterial protection • Efficiënt tegen bacteriën 	540 g/ml (lm) ±10 g/m ²	60 000 EN ISO 5470-2	6-7 EN ISO 105-B02	5-5 EN ISO 105 x 12 • Mouillé-Sec • Wet/Dry • Nat-Droog	EN 1021 - 1&2 BS 5852 1&2 UNI 9175 class 11M TB 117:2013	<ul style="list-style-type: none"> • Sans Phtalates • Phthalate-free • Ftalaatvrij
Fenice Cat. D	<ul style="list-style-type: none"> • 75% Laine 25% PA • 75% wool 25% PA • 75% wol 25% PA 	335 g/m ² ±7% 500 g/ml (lm) ±7%	100 000 ±20% EN ISO 5470-2	6 ±1% EN ISO 105-B02	4-5 EN ISO 105 x 12 • Mouillé-Sec • Wet/Dry • Nat-Droog	EN 1021 - 1&2 BS 5852 Crib 5 CLASS 1 1M CALIFORNIA TB 117	<ul style="list-style-type: none"> • Tissu recyclable • Recyclable fabric • Recyclebare stof
Cyber Cat. D	<ul style="list-style-type: none"> • 100% polyester recyclé post-consommation • 100% post-consumer recycled polyester • 100% post-consumer gerecycled polyester 	570 g/ml (lm) (18.39 oz / lin yd)	120 000 EN ISO 12947-2	7-8 EN ISO 105-B02	4-5 EN ISO 105 x 12 • Mouillé-Sec • Wet/Dry • Nat-Droog	EN 1021 - 1&2 BS 5852 Crib 5 CALIFORNIA TB 117	STANDARD 100 by OEKO-TEX® <ul style="list-style-type: none"> • Fibre 100% recyclée • 100% recycled fabric • 100% gerecycled vezel <ul style="list-style-type: none"> • Basse émission de COV • Low emission of VOC • Lage VOS-emissie

